

Monobloc



ETA QUALITY, PROMPTLY

ETA introduces E MOX, the range of monobloc enclosure solutions proposed as the effective combination of strength and modularity.

E MOX - offered with a particular front and rear aesthetic profile to comply with E NUX style - is built up with a unique symmetric monobloc structure with top, bottom and side panels welded, and front door provided with an innovative lever-operated latch system.

E MOX is completely compatible with E NUX standard range of accessories: it can be completely customized thanks to the assembly of specific vertical uprights, which allow creating the same inner spaces of E NUX modular cabinet system.

The product philosophy that led the design of E MOX is based on the concepts of time and space, in order to provide the end user with the maximum advantage in terms of optimization and saving.

Time: because E MOX is a unique cabinet completely welded, with mounting plate included in the supply and available in 27 standard dimensions. Time: because E MOX is totally compatible with E NUX cabinets in terms of standard components (doors, rear panels, base plates, mounting plate) and inner accessories (profiles, brackets, partial mounting plates, etc).

Time: because E MOX is a monobloc shell with modular options.

BENEFITS

Aesthetic profile and new colour	Design
Symmetric monobloc structure	Strength
Possibility of creating inner E NUX structure	Modularity
Standard E NUX accessories	Compatibility
Innovative latch system	Functionality
Perfect adherence to industry standards	Safety



e mox

MONOBLOC CABINETS

FEATURES

- 1 Unique symmetric monobloc structure with top, bottom and side panels welded.
 - 2 Front and rear aesthetic profiles to comply with E NUX style.
 - 3 Removable rear panel and possibility to assemble rear door (E NUX door and rear panel).
 - 4 Lifting with 2 eyebolts.
 - 5 Front inserted mounting plate (EUPA) included in the supply.
 - 6 Innovative opening system with a unique lever mechanism, unique design and:
3-point locking for H=1600
4-point locking for H=1800/2000
with possibility to mount different inserts.
 - 7 Effective sliding guides system integrated in the bottom.
 - 8 Modular cable entry bottom with adjustable base plates and gasket.
 - 9 Reversible door with stiffening frame.
 - 10 Vertical uprights available as accessories to create the same inner structure of E NUX cabinet.
 - 11 Wide range of standard accessories of E NUX system (door, rear panel, mounting plate, complementary accessories).
 - 12 Differentiated colour impact: RAL7035 for the cabinet and new colour RAL5020 matched with aesthetic profiles, handle and plinth.
 - 13 Easy-to-assemble modular plinth EUZE.
- Protection rating: IP66 (single door), IP55 (double door) - Nema 12 - IK10.





MONOBLOC CABINETS

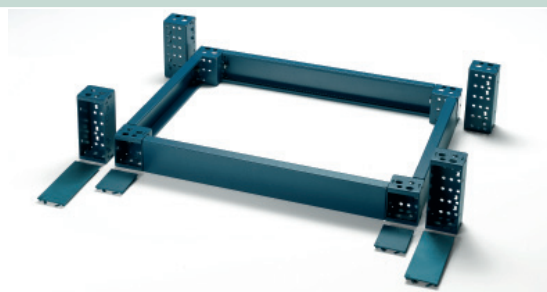
Monobloc

IMAGES ARE ONLY INTENDED TO ILLUSTRATE THE PRODUCT

E MOX



ACCESSORIES



DIMENSIONS W x H x D	CABINET WITH BLANK DOOR (1)	CABINET WITH PLEXI DOOR (2)	PLINTH H=100 UNIVERSAL CORNER PIECES (3)	PLINTH H=100 FRONT CROSSPIECES (4)	PLINTH H=100 SIDE CROSSPIECES (5)
600 x 1600 x 400	EMOX061604PR	EMOX061604PV	EUZE-A100	EUZE-T0600	EUZE-T0400M
600 x 1800 x 400	EMOX061804PR	EMOX061804PV	EUZE-A100	EUZE-T0600	EUZE-T0400M
600 x 1800 x 500	EMOX061805PR	EMOX061805PV	EUZE-A100	EUZE-T0600	EUZE-T0500M
600 x 2000 x 400	EMOX062004PR	EMOX062004PV	EUZE-A100	EUZE-T0600	EUZE-T0400M
600 x 2000 x 500	EMOX062005PR	EMOX062005PV	EUZE-A100	EUZE-T0600	EUZE-T0500M
800 x 1600 x 400	EMOX081604PR	EMOX081604PV	EUZE-A100	EUZE-T0800	EUZE-T0400M
800 x 1800 x 400	EMOX081804PR	EMOX081804PV	EUZE-A100	EUZE-T0800	EUZE-T0400M
800 x 1800 x 500	EMOX081805PR	EMOX081805PV	EUZE-A100	EUZE-T0800	EUZE-T0500M
800 x 2000 x 400	EMOX082004PR	EMOX082004PV	EUZE-A100	EUZE-T0800	EUZE-T0400M
800 x 2000 x 500	EMOX082005PR	EMOX082005PV	EUZE-A100	EUZE-T0800	EUZE-T0500M
1000 x 1600 x 400	EMOX101604PR	EMOX101604PV	EUZE-A100	EUZE-T1000	EUZE-T0400M
1000 x 1800 x 400	EMOX101804PR	EMOX101804PV	EUZE-A100	EUZE-T1000	EUZE-T0400M
1000 x 1800 x 500	EMOX101805PR*	EMOX101805PV	EUZE-A100	EUZE-T1000	EUZE-T0500M
1000 x 2000 x 400	EMOX102004PR*	EMOX102004PV	EUZE-A100	EUZE-T1000	EUZE-T0400M
1000 x 2000 x 500	EMOX102005PR	EMOX102005PV	EUZE-A100	EUZE-T1000	EUZE-T0500M
1200 x 800 x 400	EMOX120804PR		EUZE-A100	EUZE-T1200	EUZE-T0400M
1200 x 1000 x 400	EMOX121004PR		EUZE-A100	EUZE-T1200	EUZE-T0400M
1200 x 1600 x 400	EMOX121604PR		EUZE-A100	EUZE-T1200	EUZE-T0400M
1200 x 1800 x 400	EMOX121804PR		EUZE-A100	EUZE-T1200	EUZE-T0400M
1200 x 1800 x 500	EMOX121805PR*		EUZE-A100	EUZE-T1200	EUZE-T0500M
1200 x 2000 x 400	EMOX122004PR*		EUZE-A100	EUZE-T1200	EUZE-T0400M
1200 x 2000 x 500	EMOX122005PR		EUZE-A100	EUZE-T1200	EUZE-T0500M
1400 x 1000 x 400	EMOX141004PR		EUZE-A100	EUZE-T1400	EUZE-T0400M
1600 x 1000 x 400	EMOX161004PR*		EUZE-A100	EUZE-T1600	EUZE-T0400M
1600 x 1800 x 400	EMOX161804PR		EUZE-A100	EUZE-T1600	EUZE-T0400M
1600 x 2000 x 400	EMOX162004PR		EUZE-A100	EUZE-T1600	EUZE-T0400M
1800 x 1000 x 400	EMOX181004PR		EUZE-A100	EUZE-T1800	EUZE-T0400M

- (1) supply includes cabinet with welded side panels, removable rear panel, blank door and EUPA front inserted mounting plate. To be ordered separately plinth and WTGS-003 eyebolts.
- (2) supply includes cabinet with welded side panels, removable rear panel, plexi door and EUPA front inserted mounting plate. To be ordered separately plinth and WTGS-003 eyebolts.
- (3) supply includes 4 pieces
- (4) supply included 2 pieces
- (5) supply includes 2 pieces
- (*) Horizontal version



CHARACTERISTICS

Enclosure manufactured from 1.5 mm thick sheet steel with removable rear panel. Door manufactured from 2.0 mm thick sheet steel with stiffening frame.

PAINT FINISH

ETA standard epoxy polyester powder coating
 Structure and door: RAL 7035 textured finish.
 Aesthetic profiles: RAL 5020 textured finish.

Monobloc

SUPPLY

- structure complete with aesthetic profiles and rear panel.
- 2.0 mm thick sheet steel door, with stiffening frame and complete with \varnothing 3 mm lever-operated double bar locking system
- adjustable cable entry
- mounting plate manufactured from 2.5 mm thick sendzimir sheet steel (for E MOX W=1000, EUPA 3.0 mm thick).

PROTECTION RATING

- IP66 complying with IEC EN62208; EN60529
- NEMA 12 complying with UL508A; UL50
- protection degree guaranteed by the two-component polyurethane foam seal
- impact resistance IK10 complying with IEC EN62208, EN62202.

Note: in case it is necessary to replace the mounting plate EUPA, you have to use the codes on page 52.



Universal plinth EUZE, see page 98

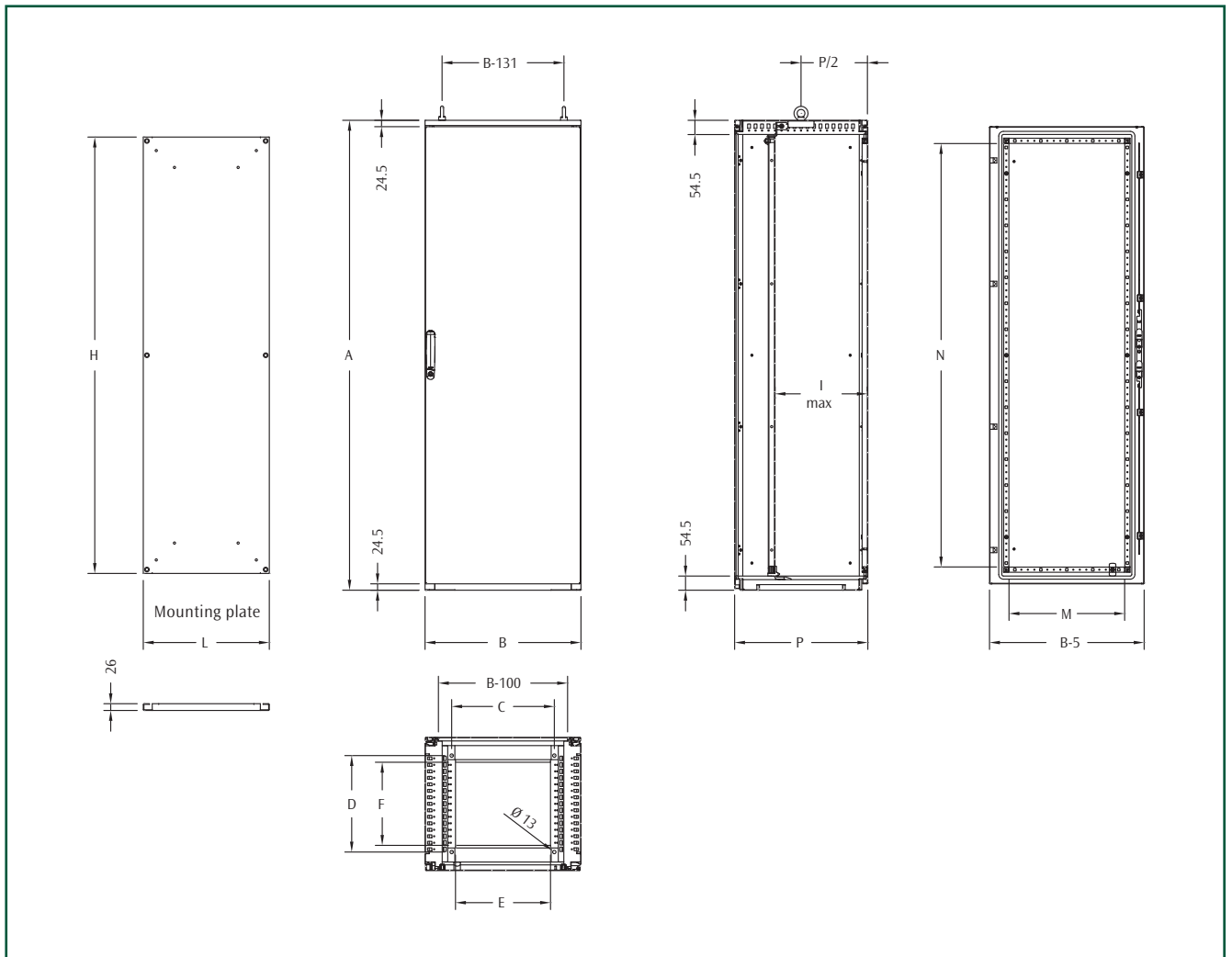


Eyebolts, see page 99



Internal uprights, see page 99

Monobloc



DIMENSIONAL SPECIFICATIONS

DIMENSIONS			CABINET DIMENSIONS			FLOOR FIXING		CABLE ENTRY		DOOR SPACE		MOUNTING PLATE DIM.		
WIDTH	HEIGHT	DEPTH	B	A	P	C	D	E	F	M	N	L	H	I
600	1600	400	600	1609	414	395	271	365	220	445	1430	485	1480	350
600	1800	400	600	1809	414	395	271	365	220	445	1630	485	1680	350
600	1800	500	600	1809	514	395	371	365	320	445	1630	485	1680	450
600	2000	400	600	2009	414	395	271	365	220	445	1830	485	1880	350
600	2000	500	600	2009	514	395	371	365	320	445	1830	485	1880	450
800	1600	400	800	1609	414	595	271	565	220	645	1430	685	1480	350
800	1800	400	800	1809	414	595	271	565	220	645	1630	685	1680	350
800	1800	500	800	1809	514	595	371	565	320	645	1630	685	1680	450
800	2000	400	800	2009	414	595	271	565	220	645	1830	685	1880	350
800	2000	500	800	2009	514	595	371	565	320	645	1830	685	1880	450
1000	1600	400	1000	1609	414	795	271	765	220	845	1430	885	1480	350
1000	1800	400	1000	1809	414	795	271	765	220	845	1630	885	1680	350
1000	1800	500	1000	1809	514	795	371	765	320	845	1630	885	1680	450
1000	2000	400	1000	2009	414	795	271	765	220	845	1830	885	1880	350
1000	2000	500	1000	2009	514	795	371	765	320	845	1830	885	1880	450

600			CABINET CODES	
DIMENSIONS			CABINET WITH BLANK DOOR	CABINET WITH PLEXI DOOR
WIDTH	HEIGHT	DEPTH		
600	1600	400	EMOX061604PR	EMOX061604PV
600	1800	400	EMOX061804PR	EMOX061804PV
600	1800	500	EMOX061805PR	EMOX061805PV
600	2000	400	EMOX062004PR	EMOX062004PV
600	2000	500	EMOX062005PR	EMOX062005PV

Monobloc

800			CABINET CODES	
DIMENSIONS			CABINET WITH BLANK DOOR	CABINET WITH PLEXI DOOR
WIDTH	HEIGHT	DEPTH		
800	1600	400	EMOX081604PR	EMOX081604PV
800	1800	400	EMOX081804PR	EMOX081804PV
800	1800	500	EMOX081805PR	EMOX081805PV
800	2000	400	EMOX082004PR	EMOX082004PV
800	2000	500	EMOX082005PR	EMOX082005PV

1000			CABINET CODES	
DIMENSIONS			CABINET WITH BLANK DOOR	CABINET WITH PLEXI DOOR
WIDTH	HEIGHT	DEPTH		
1000	1600	400	EMOX101604PR	EMOX101604PV
1000	1800	400	EMOX101804PR	EMOX101804PV
1000	1800	500	EMOX101805PR	EMOX101805PV
1000	2000	400	EMOX102004PR	EMOX102004PV
1000	2000	500	EMOX102005PR	EMOX102005PV

Note: to order the inner door, see the EUPI code on page 62.



Monobloc



CHARACTERISTICS

Enclosure manufactured from 1.5 mm thick sheet steel with removable rear panel. Double door manufactured from 2.0 mm thick sheet steel with stiffening frame.

PAINT FINISH

ETA standard epoxy polyester powder coating. Structure and door: RAL 7035 textured finish. Aesthetic profiles: RAL 5020 textured finish.

SUPPLY

- structure complete with aesthetic profiles and rear panel
- 2.0 mm thick sheet steel double door, with stiffening frame and complete with ø 3 mm lever-operated double bar locking system
- adjustable cable entry
- mounting plate manufactured from 3.0 mm thick sendzimir sheet steel.

PROTECTION RATING

- IP55 complying with IEC EN62208; EN60529
- NEMA 12 complying with UL508A; UL50
- protection degree guaranteed by the two-component polyurethane foam seal
- impact resistance IK10 complying with IEC EN62208, EN62202.

Note: in case it is necessary to replace the mounting plate EUPA, you have to use the codes on page 52.



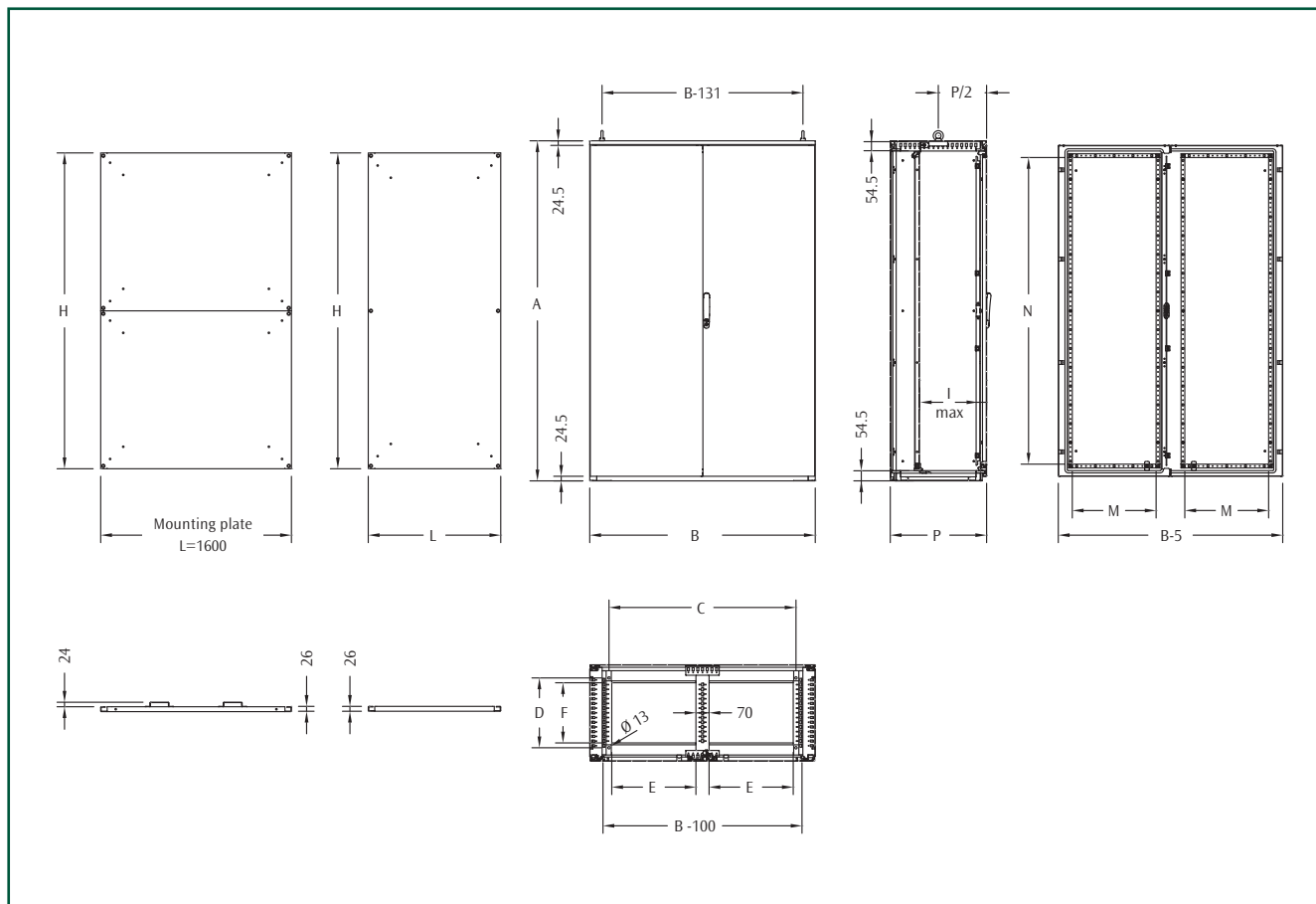
Universal plinth EUZE, see page 98



Eyebolts, see page 99



Internal uprights, see page 99



DIMENSIONAL SPECIFICATIONS

DIMENSIONS			CABINET DIMENSIONS			FLOOR FIXING		CABLE ENTRY		DOOR SPACE		MOUNTING PLATE DIM.		
WIDTH	HEIGHT	DEPTH	B	A	P	C	D	E	F	M	N	L	H	I
1200	1600	400	1200	1609	414	995	271	447	220	445	1430	1085	1480	350
1200	1800	400	1200	1809	414	995	271	447	220	445	1630	1085	1680	350
1200	1800	500	1200	1809	514	995	371	447	320	445	1630	1085	1680	450
1200	2000	400	1200	2009	414	995	271	447	220	445	1830	1085	1880	350
1200	2000	500	1200	2009	514	995	371	447	320	445	1830	1085	1880	450
1600	1800	400	1600	1809	414	1395	271	647	220	645	1630	1485	1680	350
1600	2000	400	1600	2009	414	1395	271	647	220	645	1830	1485	1880	350

1200

CABINET CODES

DIMENSIONS			CABINET WITH BLANK DOOR		
WIDTH	HEIGHT	DEPTH			
1200	1600	400	EMOX121604PR		
1200	1800	400	EMOX121804PR		
1200	1800	500	EMOX121805PR		
1200	2000	400	EMOX122004PR		
1200	2000	500	EMOX122005PR		

1600

CABINET CODES

DIMENSIONS			CABINET WITH BLANK DOOR		
WIDTH	HEIGHT	DEPTH			
1600	1800	400	EMOX161804PR		
1600	2000	400	EMOX162004PR		



Monobloc



CHARACTERISTICS

Enclosure manufactured from 1.5 mm thick sheet steel with removable rear panel. Double door manufactured from 2.0 mm thick sheet steel with stiffening frame.

PAINT FINISH

ETA standard epoxy polyester powder coating. Structure and door: RAL 7035 textured finish. Aesthetic profiles: RAL 5020 textured finish.

SUPPLY

- structure complete with aesthetic profiles and rear panel
- 2.0 mm thick sheet steel double door, with stiffening frame and complete with ø 3 mm lever-operated double bar locking system
- adjustable cable entry
- mounting plate manufactured from 3.0 mm thick sendzimir sheet steel.

PROTECTION RATING

- IP55 complying with IEC EN62208; EN60529
- NEMA 12 complying with UL508A; UL50
- protection degree guaranteed by the two-component polyurethane foam seal
- impact resistance IK10 complying with IEC EN62208, EN62202.

Note: in case it is necessary to replace the mounting plate EUPA, you have to use the codes on page 52.



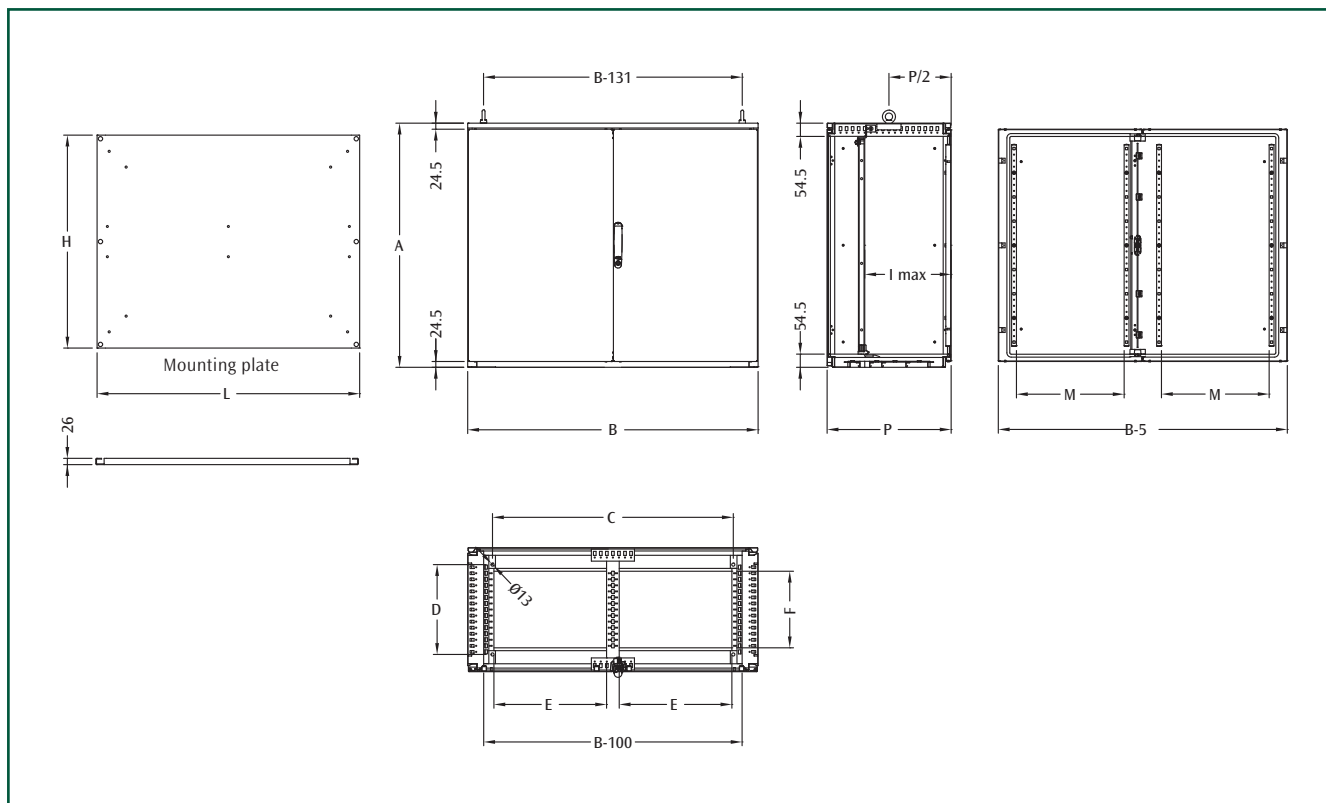
Universal plinth EUZE, see page 98



Eyebolts, see page 99



Internal uprights, see page 99



DIMENSIONAL SPECIFICATIONS

DIMENSIONS			CABINET DIMENSIONS			FLOOR FIXING		CABLE ENTRY		DOOR SPACE	MOUNTING PLATE DIM.		
WIDTH	HEIGHT	DEPTH	B	A	P	C	D	E	F	M	L	H	I (MAX)
1200	800	400	1200	809	414	995	271	447	220	445	1085	680	350
1200	1000	400	1200	1009	414	995	271	447	220	445	1085	880	350
1400	1000	400	1400	1009	414	1195	271	547	220	545	1285	880	350
1600	1000	400	1600	1009	414	1395	271	647	220	645	1485	880	350
1800	1000	400	1800	1009	414	1595	271	747	220	745	1685	880	350

CABINET CODE

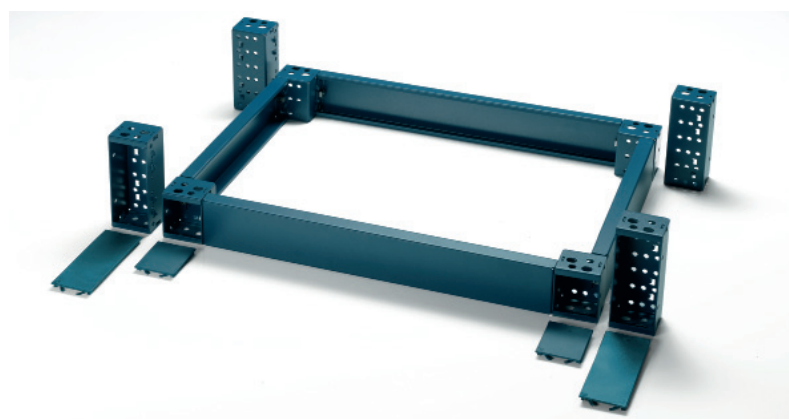
DIMENSIONS			CABINET WITH BLANK DOOR	
WIDTH	HEIGHT	DEPTH		
1200	800	400	EMOX120804PR	
1200	1000	400	EMOX121004PR	
1400	1000	400	EMOX141004PR	
1600	1000	400	EMOX161004PR	
1800	1000	400	EMOX181004PR	

Note: in case it is necessary to replace the mounting plate EUPA, you have to use the codes here below.

SPARE FRONT-INSERTED MOUNTING PLATE

EUPA CODE	CABINET DIMENSIONS			MOUNTING PLATE DIM.		
	B	A	P	L	H	I (MAX)
EUPA-120080	1200	809	395	1085	680	350
EUPA-120100	1200	1009	395	1085	880	350
EUPA-140100	1400	1009	395	1285	880	350
EUPA-160100	1600	1009	395	1485	880	350
EUPA-180100	1800	1009	395	1685	880	350

Note: mounting plate EUPA for E MOX horizontal version is supplied in one piece.



Monobloc

MODULAR PLINTH EUZE

CHARACTERISTICS

Corner pieces manufactured from 2.5 mm thick press bent sheet steel, with PVC front covers caps. Front and side crosspieces manufactured from 2.0 mm thick press bent sheet steel.

PAINT FINISH

ETA standard epoxy polyester powder coating. Colour: RAL 5020 textured finish.

SUPPLY

- The modular plinth is made up of:
- corner pieces: supply includes 4 pieces complete with front covers and mounting hardware
 - front crosspieces: supply includes 2 pieces
 - side crosspieces: supply includes 2 pieces.

UNIVERSAL CORNER PIECES

EUZE CODE	DESCRIPTION
EUZE-A100	CORNER PIECES FOR PLINTH H=100
EUZE-A200	CORNER PIECES FOR PLINTH H=200

Note supply includes 4 pieces with mounting accessories.

FRONT CROSSPIECES

EUZE CODE	DESCRIPTION	CROSS. LENGTH MM
EUZE-T0600	PLINTH FRONT CROSSPIECES W=600	444
EUZE-T0800	PLINTH FRONT CROSSPIECES W=800	644
EUZE-T1000	PLINTH FRONT CROSSPIECES W=1000	844
EUZE-T1200	PLINTH FRONT CROSSPIECES W=1200	1044
EUZE-T1400	PLINTH FRONT CROSSPIECES W=1400	1244
EUZE-T1600	PLINTH FRONT CROSSPIECES W=1600	1444
EUZE-T1800	PLINTH FRONT CROSSPIECES W=1800	1644

Note: supply includes 2 pieces.

Note: to order the front crosspieces H=200, add the suffix "D" to the code. (I.e.: EUZE-T0600D).

E MOX SIDE CROSSPIECES

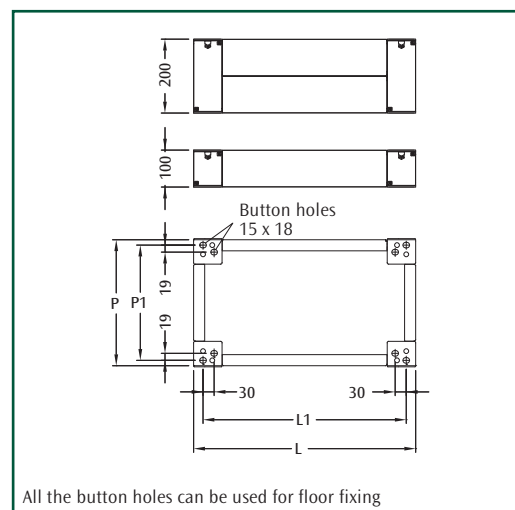
EUZE CODE	DESCRIPTION	CROSS. LENGTH MM
EUZE-T0400M	SIDE CROSSPIECES D=400	218
EUZE-T0500M	SIDE CROSSPIECES D=500	318

Note: supply includes 2 pieces.

Note: to order the side crosspieces H=200, add the suffix "D" to the code. (I.e.: EUZE-T0400MD).

DIMENSIONAL SPECIFICATIONS

DIMENSIONS		PLINTH DIMENSIONS		CENT. DISTANCES	
WIDTH	DEPTH	L	P	L1	P1
600	400	600	353	549	324
600	500	600	453	549	424
800	400	800	353	749	324
800	500	800	453	749	424
1000	400	1000	353	949	324
1000	500	1000	453	949	424
1200	400	1200	353	1149	324
1200	500	1200	453	1149	424
1400	400	1400	353	1349	324
1600	400	1600	353	1549	324
1800	400	1800	353	1749	324



All the button holes can be used for floor fixing

COMPATIBILITY WITH E NUX SYSTEM AND ETA ACCESSORIES:

- E NUX blank door, plexi door, rear panel
- mounting plate EUPA
- partial mounting plate EUPR, see page 59
- inner door EUPI, see page 62
- locking system WE, see page 64
- E NUX complementary accessories (i.e.: profiles H=50 mm WTPR and fast fixing brackets, door frame, drawing desk WTRL, plan pocket...) for inner mounting.

RAIN CANOPY EMTT

Ideal solution for outdoor installations where you need extra protection from atmospheric agents. We recommend the use of a special polyester painting for outdoor applications.

CHARACTERISTICS

Manufactured from 1.5 mm thick sheet steel.

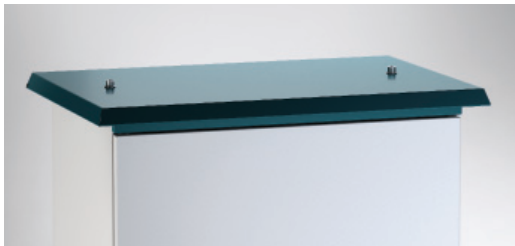
PAINT FINISH

ETA standard epoxy polyester powder coating.
Colour: RAL 5020 textured finish.

SUPPLY

Includes 1 piece with mounting accessories.

Note: available on request rain canopy with different inclinations and angles.



INNER UPRIGHTS EUMI

Ideal solution to replicate the inside of the monobloc (E NUX) cabinet allowing the assembly of standard accessories including:

- partial mounting plates
- WTPR mounting rails
- 19" accessories
- shelves
- partial swing frames

CHARACTERISTICS

Manufactured from 1.5 thick sendzimir sheet steel.

SUPPLY

Includes 2 pieces with mounting accessories.

INNER UPRIGHTS

EUMI CODE	CABINET HEIGHT
EUMI000800	800
EUMI001000	1000
EUMI001600	1600
EUMI001800	1800
EUMI002000	2000



180° DOOR HINGES EUCE-180004

CHARACTERISTICS

Manufactured from pressed zama.

PAINT FINISH

Colour: RAL 5020 smooth finish.

SUPPLY

Includes 3 pieces.

MICROSWITCH WI100

Complying with standards IEC 337-VDE 0660.

SUPPLY

Includes microswitch, mounting bracket and screws.

CONFORMITY AND APPROVAL



Note: for assembly on E MOX cabinet provided with EUMI uprights, please order WI100M.



WTGS-003

Zincpassivated M12 lifting eyebolts.

SUPPLY

Includes 2 pieces with nuts and washers.

