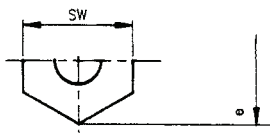


1
2
3
4
5
6
7
8
9

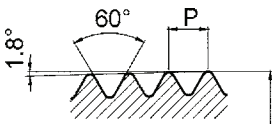
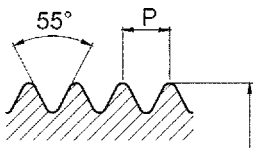
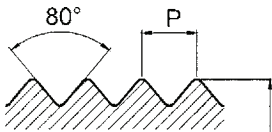
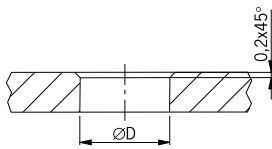
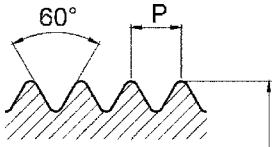


Ermittlung der Eckmasse „e“

6-Kant:
e = 1.155 x SW (Schlüsselweite)

Determinatin of the width across corners „e“

hexagon:
e = 1.155 x SW (opening of the spanner)



	G	Steigung/Pitch P	 mm	ØD mm ³⁾
---	---	---------------------	--	------------------------

Metrisches Gewinde

M 6x1.0 ¹⁾	6.00
M 6x0.75 ²⁾	6.00
M 8x1.25 ¹⁾	8.00
M 8x1.0 ²⁾	8.00
M10x1.5 ¹⁾	10.00
M10x1.0 ²⁾	10.00
M 12x1.5	12.00
M 16x1.5	16.00
M 20x1.5	20.00
M 25x1.5	25.00
M 32x1.5	32.00
M 40x1.5	40.00
M 50x1.5	50.00
M 63x1.5	63.00
M 75x1.5	75.00
M 80x1.5	80.00
M 85x2.0	85.00
M 95x2.0	95.00
M100x3.0	100.00
M105x3.0	105.00
M115x3.0	115.00

Metric thread

5.00	6.0
5.25	6.0
6.75	8.0
7.00	8.0
8.50	10.0
9.00	10.0
10.50	12.0
14.50	16.0
18.50	20.0
23.50	25.0
30.50	32.0
38.50	40.2
48.50	50.2
61.50	63.2
73.50	75.2
78.50	80.2
83.00	85.2
93.00	95.2
97.00	100.2
102.00	105.2
112.00	115.2

Pg - Gewinde

Pg 7	12.50
Pg 9	15.20
Pg 11	18.60
Pg 13	20.40
Pg 16	22.50
Pg 21	28.30
Pg 29	37.00
Pg 36	47.00
Pg 42	54.00
Pg 48	59.30

Thread Pg

11.40	12.6
14.00	15.3
17.25	18.7
19.00	20.5
21.25	22.6
26.75	28.4
35.50	37.2
45.50	47.2
52.50	54.2
57.80	59.5

Gasrohr-Gewinde

G1/4"	13.15
G3/8"	16.66
G1/2"	20.95
G5/8"	22.91
G3/4"	26.44
G1"	33.25
G1 1/4"	41.91
G1 1/2"	47.80
G2"	59.61
G2 1/2"	75.18
G3"	87.88

Gas-pipe thread

11.60	13.3
15.00	16.8
19.00	21.0
21.00	23.0
24.60	26.5
30.50	33.5
39.50	42.2
45.00	48.0
57.00	60.0
72.50	75.5
84.50	88.0

NPT-Gewinde

NPT 1/8"	10.29
NPT 1/2"	13.72
NPT 3/8"	17.14
NPT 1/2"	21.34
NPT 3/4"	26.67
NPT1	33.40
NPT1 1/4"	42.16
NPT1 1/2"	48.26
NPT2"	60.32

Filetage NPT

8.43	
11.13	
14.27	
17.86	
23.28	
28.98	
37.69	
43.66	
55.58	

- 1) Metrisches Regelgewinde
- 2) Metrisches Gewinde nach EN60423
- 3) Empfohlen zur Gewährleistung eines höheren IP-Schutzgrades

- 1) metric coarse pitch thread
- 2) metric thread acc. to EN 60423
- 3) Advisable dimension if elevated IP protection is requires